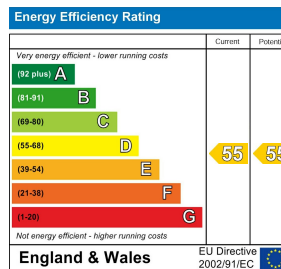
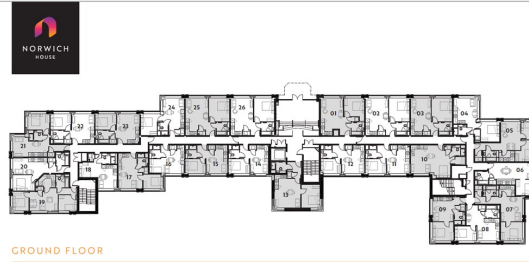




Norwich House | Camberley | Surrey | GU15 3SQ

£1,030 PCM

Waterfords
Residential Sales & Lettings



Description

Waterfords Camberley are delighted to present a collection of contemporary converted apartments in the heart of Camberley town centre. The Available Apartment is a one bedroom set in Norwich house Available January 2026 on an Unfurnished basis.

Key features

- One Bedroom Apartment
- High Specification Throughout
- Allocated Underground Parking Available For An Extra Charge
- Council Tax Band B
- Minimum 12 Month Let
- Purpose Built For Renters
- Fully Fitted Kitchen with All Appliances
- Available January 2026 on an Unfurnished Basis.
- EPC C
- Town Centre Location



35 Plough Road
Hampshire
GU46 7UW
01276 903006
surreylettings@waterfords.co.uk
<https://www.waterfords.co.uk/>